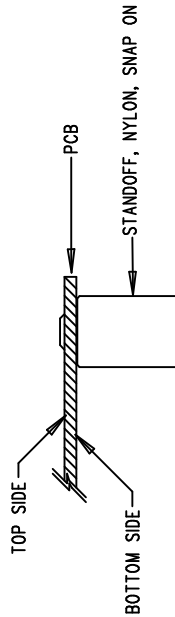



## Assembly Top Drawing

## NOTES: UNLESS OTHERWISE SPECIFIED

1. WORKMANSHIP SHALL BE IN ACCORDANCE WITH IPC-A-610.
2. INSTALL SHUNT ON JP1 PIN 1 AND 2.
3. PARTS TO OMIT WILL BE SPECIFIED ON THE BILLS OF MATERIAL. LOCATIONS OF OMITTED PARTS SHALL BE FREE OF SOLDER. MASK THE SOLDER STENCIL WHERE SMT PARTS ARE OMITTED.
4. DEPANELIZE BOARDS AFTER ASSEMBLY AND ROUTE-OUT THE BREAKOUT TABS ON FOUR SIDES OF THE BOARD EDGE.
5. ASSY PROCESSES SHALL INCLUDE: REFLOW SOLDER TOP SIDE SMD.
6. INSTALL 4 STANDOFFS AT 4 CORNERS AS SHOWN BELOW:



<b>APPROVALS</b>						 1630 McCarthy Blvd. Milpitas, CA 95035 PH: (408)432-1900	
		INIT		DATE			
DRAWN	CHECK						
DESIGN	Antonia K		1/24/07				
ENGR	Jesus R		1/24/07				
TITLE: LT3495EDDB MICROPOWER LOW NOISE BOOST CONVERTER WITH OUTPUT DISCONNECT							
SIZE		A		DEM O		REV. 2	
						DC1219A	
SCALE = NONE						SHT 1 of 1	